

Summary of CMS Higgs Physics

Walaa Elmetenawee^{1,2} on Behalf of the CMS Collaboration

¹INFN - Sezione di Bari, Via Giovanni Amendola, 173, 70126 Bari, Italy

²Physics Department Faculty of Science, Helwan University, Ain Helwan, 11795 Cairo, Egypt

Abstract

Since the discovery of the Higgs boson in 2012, substantial advancements have been achieved in exploring its characteristics. The utilization of extensive data sets has facilitated recent results, enabling not only the determination of the Higgs boson mass and total production cross section in the most sensitive decay channels, but also measurements of fiducial and differential cross sections, as well as searches for rare or exotic processes. The study of the Higgs boson pair production which is fundamental to the study of the Higgs boson self-coupling, received a significant boost, too. These proceedings focus on the latest Higgs physics results achieved by the CMS Collaboration using the entire dataset collected during Run-2 of the LHC, corresponding to an integrated luminosity of approximately 140 fb^{-1} .

Keywords: CMS, Higgs, fiducial and differential measurements, self-coupling

DOI: 10.31526/BSM-2023.26

1. INTRODUCTION

In July 2012, the ATLAS and CMS Collaborations [1, 2] at the CERN LHC jointly announced the discovery of a scalar particle consistent with the predicted standard model (SM) Higgs boson [3, 4, 5]. Following this landmark discovery, both collaborations began a detailed exploration of the particle's properties, clearly demonstrating its CP-even structure and measuring its mass to be compatible with 125 GeV. Since the SM does not predict the precise value of m_H , its experimental determination becomes crucial to understand the accessible production modes and decay channels of the Higgs boson at the LHC. Leveraging the datasets from Run 2 of the LHC, precise measurements of the Higgs boson properties are within reach. The mass and width are known with uncertainties on the order of MeV, and most of the major production mechanisms and decay channels have been experimentally observed. Furthermore, the available dataset is large enough to facilitate fiducial and differential measurements, crucial for a deeper understanding of the SM and the exploration of potential deviations that could hint at physics beyond the SM (BSM). Employing dedicated analysis techniques, sensitivity to the Higgs boson coupling to second-generation fermions was obtained, CP properties were probed, and substantial advances were made in understanding di-Higgs boson production.

2. HIGGS BOSON MASS AND WIDTH

The Higgs boson mass is measured through the two discovery channels ($H \rightarrow \gamma\gamma$ and $H \rightarrow ZZ$), chosen for their optimal invariant mass resolution and a good signal-to-background ratio around the Higgs boson mass peak. Accurate energy and momentum calibrations, relying on meticulous detector calibration and alignment, are crucial for these analyses. The most precise result from CMS at the time of the conference [6], which combines data from 2016 with those from Run 1, yielding a Higgs boson mass of $m_H = 125.38 \pm 0.14 \text{ GeV}$, with an uncertainty of 0.11%. Figure 1 (left) illustrates a summary of the individual and combined measurements using the Run 1 and 2016 datasets. Since these results were presented, a more precise measurement in the $H \rightarrow ZZ \rightarrow 4\ell$ channel was made public by the CMS Collaboration (see [7]).

Direct measurements of the Higgs boson mass lack sensitivity to its intrinsic width, given its significantly smaller scale compared to the typical invariant mass resolution of the CMS experiment. Indirect measurements exploit the proportional relationship between off-shell and on-shell productions of a resonance and its width:

$$\sigma^{\text{on-shell}} \propto \frac{g_p^2 g_d^2}{\Gamma_H} \propto \mu_p, \quad \sigma^{\text{off-shell}} \propto g_p^2 g_d^2 \propto \mu_p \Gamma_H, \quad (1)$$

where g_p and g_d are the couplings associated with the Higgs boson production and decay modes, respectively, and μ_p is the on-shell Higgs boson signal strength. CMS pursued this approach using the full Run 2 dataset and the $H \rightarrow ZZ$ final state [8], revealing evidence of off-shell Higgs boson production. Figure 1 (right) illustrates likelihood scans across Γ_H . These scans consistently incorporate information from the 4ℓ on-shell data. The three presented cases involve the inclusion of the 4ℓ off-shell data alone, the $2\ell 2\nu$ off-shell data alone, or both. The log-likelihood curves exhibit steep slopes near $\mu_{\text{off-shell}} = 0$ and $\Gamma_H = 0 \text{ MeV}$ due to interference terms between the H -boson and continuum- ZZ production amplitudes. The measured Higgs boson width, $\Gamma_H = 3.2^{+2.4}_{-1.7} \text{ MeV}$, is compatible with the standard model's expected value of 4.1 MeV.

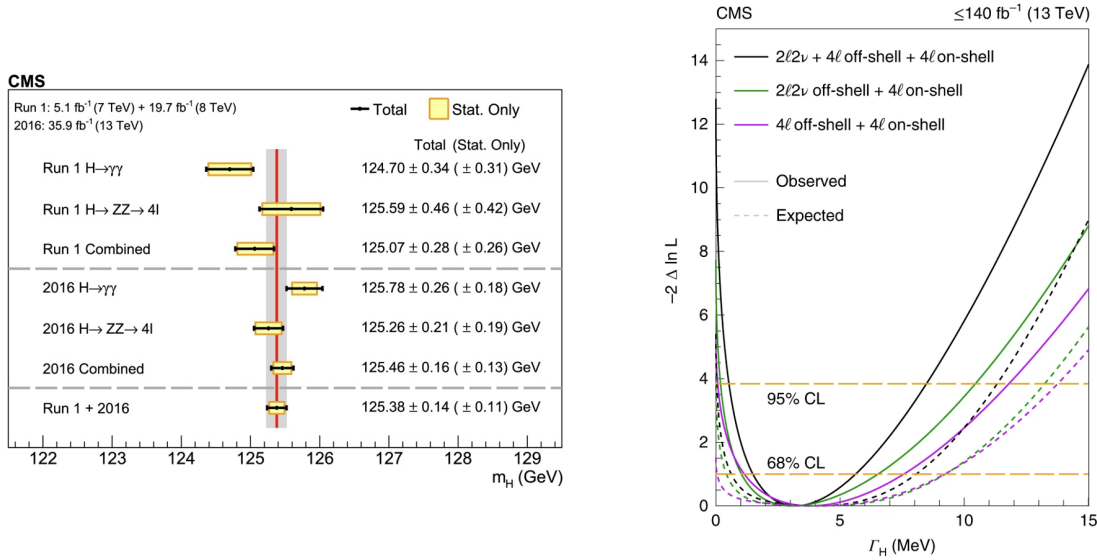


FIGURE 1: *Left*: a summary of the measured Higgs boson mass in the $H \rightarrow \gamma\gamma$ and $H \rightarrow ZZ \rightarrow 4\ell$ decay channels, and for the combination of the two is presented [6]. *Right*: observed (solid) and expected (dashed) one-parameter likelihood scans over the Higgs width Γ_H . Scans are shown for the combination of 4ℓ on-shell data with 4ℓ off-shell (magenta) or $2\ell 2\nu$ off-shell data (green) alone, or with both datasets (black) [8].

3. CROSS SECTION MEASUREMENTS

Inclusive and differential measurements of the Higgs boson production cross section are important tools to test the SM expectations and to probe BSM physics. Simplified template cross sections (STXS) measurements and fiducial differential cross section measurements have been performed in the $H \rightarrow \gamma\gamma$ [9, 10], $H \rightarrow ZZ$ [11], $H \rightarrow WW$ [12], $H \rightarrow \tau\tau$ [13], and $H \rightarrow b\bar{b}$ [14] decay channels by the CMS experiment. A selection of these results is presented in this section, focusing on the measurements done in the $H \rightarrow \gamma\gamma$ and $H \rightarrow ZZ$ channels.

3.1. Simplified Template Cross Sections Measurements

STXS has been adopted as a common framework by the LHC experiments for Higgs boson measurements. It aims to enhance sensitivity to BSM physics effects while minimizing theory dependence by defining exclusive kinematic regions in the Higgs boson production phase space. In the STXS framework, there is no fiducial selection for the decay, such that measurements in different decay channels can be easily combined. The framework is organized into kinematic regions or bins, categorized in stages with increasing granularity. The most recent stage in which measurements have been performed is stage 1.2.

In the $H \rightarrow ZZ \rightarrow 4\ell$ channel [11], the STXS measurements heavily utilize kinematic discriminants based on matrix-element probabilities. They are used in the event selection, to build STXS categories, and in the 2D likelihood fit. Due to a low number of events, some bins, like $t\bar{t}H$ and the high- m_{jj} VBF bin are merged. Conversely, certain ggH bins achieve a precision of up to 16%, as shown in Figure 2 (left).

The $H \rightarrow \gamma\gamma$ [9, 10] analysis employs Boosted Decision Trees (BDTs) and Deep Neural Networks (DNNs) to construct categories targeting STXS bins. Covering all Higgs boson production modes down to $t\bar{t}H$, the analysis leverages diphoton decay kinematics to fit the Higgs boson's invariant mass peak over the combinatorial background. The STXS results are presented in two binning schemes: one aiming for broad STXS bin coverage (27 bins), with minimal merging to avoid excessive parameter anti-correlation, and the other adopting maximal merging until the expected uncertainty is less than 150% of the SM prediction, as depicted in Figure 2 (right). Notably, the ggH BSM bin ($p_T^H > 200$ GeV), sensitive to BSM physics in the ggH loop, is measured with an uncertainty below 40% and aligns with the SM prediction. Another significant result is the separate measurement of the $t\bar{t}H$ production mode from $t\bar{t}H$ (usually in stage 1.2 they are measured together) and this is the best $t\bar{t}H$ measurement up to date with an observed (expected) limit at 95% confidence level (CL) of 14 (8) times the SM value.

3.2. Fiducial Differential Cross Section Measurements

The substantial Run 2 dataset has led to many inclusive Higgs boson cross section measurements starting to be primarily limited by systematic uncertainties, with sizable contributions from both experimental and theoretical sources. In addition to inclusive measurements, the available integrated luminosity allows for fiducial differential cross section measurements, probing interesting and previously unreachable regions of the phase space. Fiducial measurements report the cross section in bins of the observable of

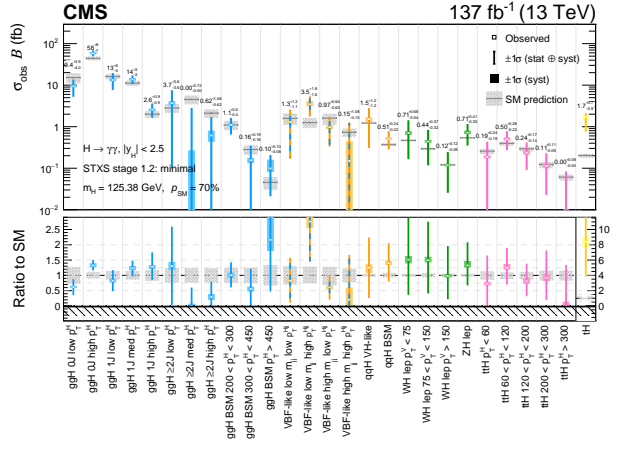
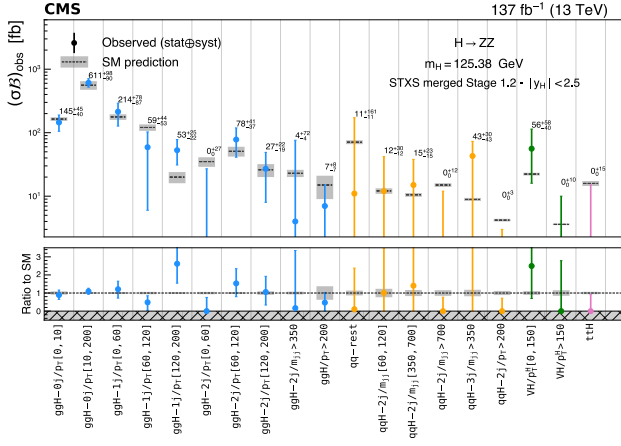


FIGURE 2: The measured cross sections $(\sigma B)_{\text{obs}}$ and the SM predictions $(\sigma B)_{\text{SM}}$ of the merged stage 1.2 STXS production bins for $H \rightarrow ZZ$ decay (left) [11] and $H \rightarrow \gamma\gamma$ (right) [9] at $m_H = 125.38$ GeV.

interest (differential) and are extrapolated to a restricted particle-level phase space (fiducial). The choice of bin boundaries is crucial and follows criteria such as alignment for combination ease, ensuring an adequate number of events for low expected uncertainty, and maintaining a good level of signal-to-background ratio. An illustrative observable is the Higgs boson transverse momentum (p_T^H), known for sensitivity to deviations in Yukawa couplings and potential BSM effects.

In the four-lepton fiducial analysis [11], the integrated cross section in the three final states and the inclusive one:

$$\sigma_{\text{fid}}^{HZZ} = 2.84^{+0.34(12.0\%)}_{-0.31(10.9\%)} \text{ fb} = 2.84^{+0.23(8.1\%)}_{-0.22(7.7\%)} (\text{stat.})^{+0.26(9.2\%)}_{-0.21(7.4\%)} (\text{sys.}) \text{ fb} \quad (2)$$

aligns with the SM expectation of $2.84 \pm 0.15(5.3\%)$. The final uncertainty is balanced between systematic and statistical components. The transverse momentum differential distribution of the Higgs is presented in Figure 3 (left). All results maintain model independence by floating the Higgs boson's branching ratio in four leptons, enhancing sensitivity to potential BSM effects in the decay.

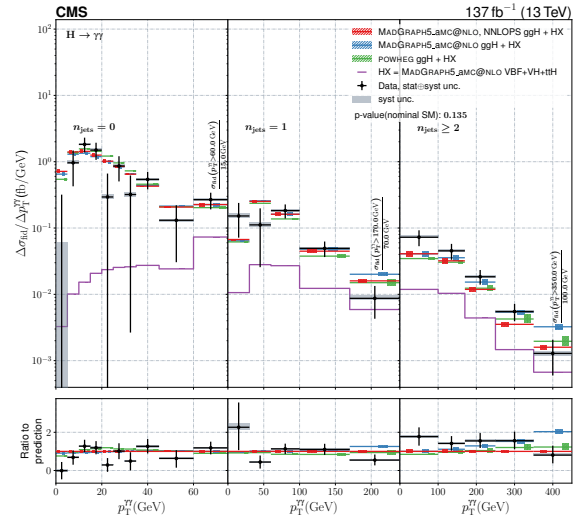
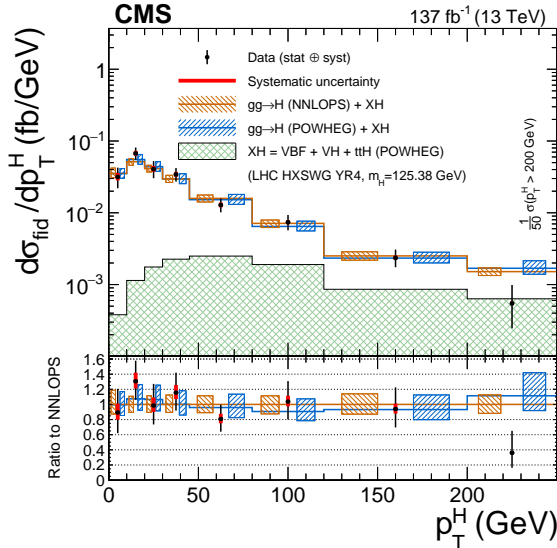


FIGURE 3: *Left*: differential fiducial cross sections measurement as a function of p_T^H in $H \rightarrow ZZ \rightarrow 4\ell$ [11]. *Right*: double-differential fiducial cross section measured in bins of p_T^H and N_{jets} in $H \rightarrow \gamma\gamma$ [10].

The $H \rightarrow \gamma\gamma$ fiducial analysis [10] provides a comprehensive range of both inclusive and differential measurements to fully characterize the decay channel. The inclusive cross section is determined within dedicated phase-space regions designed to loosely target specific production modes. Additionally, the inclusive measurement is provided in VBF-enriched phase space, with several jet-related differential observables measured in this specific region. Further exploration of the phase space involves the measure-

ment of some double differential observables, as illustrated in Figure 3 (right). The measured inclusive cross section:

$$\sigma_{\text{fid}}^{H\gamma\gamma} = 73.4_{-5.3(7.2\%)}^{+6.1(8.3\%)} \text{ fb} = 73.4_{-5.3(7.2\%)}^{+5.4(7.4\%)} (\text{stat.})_{-2.2(2.3\%)}^{+2.4(3.3\%)} (\text{syst.}) \text{ fb} \quad (3)$$

closely aligns with the SM expectation of 75.4 ± 4.1 (5.4%). The measured value's precision is nearly as expected, and the systematic component is well below the theoretical precision.

4. PRODUCTION AND DECAY RATE MEASUREMENTS

From the time of the Higgs boson discovery, one of the most direct methods to assess the agreement between data and SM expectations involves the measurement of signal strength modifiers. These modifiers represent the scalings of the production and/or decay rates relative to the SM predictions. The most general compatibility test with the SM can be performed through the introduction of an inclusive signal strength modifier $\mu = (\sigma\mathcal{B})_{\text{obs}}/(\sigma\mathcal{B})_{\text{exp}}$, scaling both production and decay rates simultaneously [15]. The inclusive signal strength modifier measured for the Higgs boson to be

$$\mu = 1.002 \pm 0.057 = 1.002 \pm 0.036(\text{theory}) \pm 0.033(\text{exp.}) \pm 0.029(\text{stat.}), \quad (4)$$

showcasing a fourfold improvement in precision compared to the measurement done at the time of discovery ($\mu = 0.87 \pm 0.23$). Notably, the statistical uncertainty is now at a comparable level with theoretical and systematic uncertainties.

A more nuanced characterization of the Higgs boson profile emerges by introducing separate signal strength modifiers for production mechanisms (μ_i) and decay channels (μ^f). Results illustrated in Figure 4 reveal that all production modes, excluding tH, are observed with a significance of 5 standard deviations or higher. Overall, all the results show a good agreement with SM predictions, yielding p -values of 3.1% and 30.1% for μ_i and μ^f , respectively.

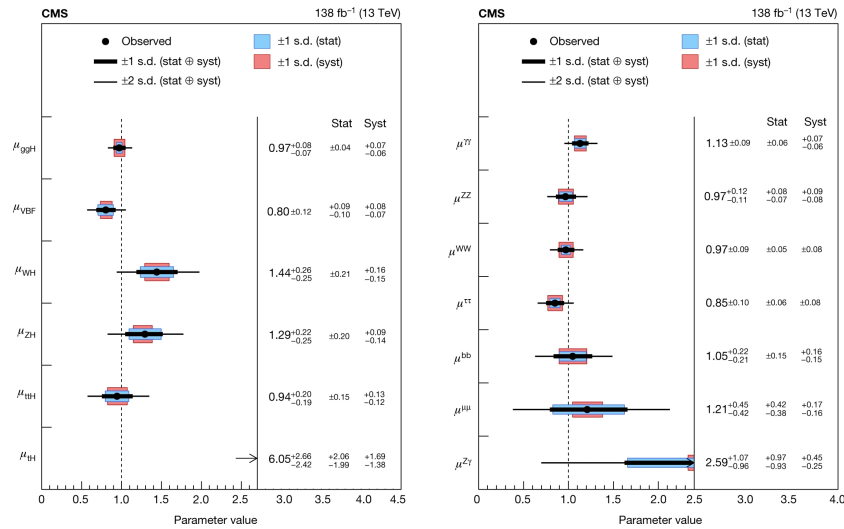


FIGURE 4: Signal strength modifiers for production μ_i (left) and decay, μ_f (right) of the Higgs boson. The vertical dashed line at 1 represents the SM expectation [15].

For a more granular comparison of Higgs boson production and decay rates with the SM, assumptions on signal strength modifiers are further relaxed. Independent parameters (μ_i^f) are introduced for each production channel and decay mode, as depicted in Figure 5. Once again, the results showcase an overall good agreement with SM predictions, corresponding to a p -value of 5.8%.

5. COUPLING STRENGTH MEASUREMENTS

The characterization of the Higgs boson discussed in the previous section can be complemented by assessing its coupling to vector bosons and fermions in the so-called k -framework, employing coupling modifiers (k_i) as scaling factors for Higgs boson interactions. A global analysis of Higgs boson interactions introduces two parameters, scaling the inclusive couplings to vector bosons (k_V) and fermions (k_f). Stress testing the SM involves measuring the couplings of the Higgs boson with individual fermions and vector bosons, aligning well with SM predictions (dashed line in the left panel of Figure 6). With the precision of these measurements, achieved with the substantial Run 2 dataset, couplings to second generation fermions started to be probed in more detail, while all other couplings are measured with remarkable precision, maintaining statistical and systematic uncertainties at similar levels.

To assess potential BSM effects, modifiers are introduced for effective couplings of the Higgs boson to gluons (k_g), photons (k_γ), and $Z\gamma$ ($k_{Z\gamma}$). The p -value for compatibility with the SM is 28%, with couplings probed at the level of 10%, except for k_μ and k_b

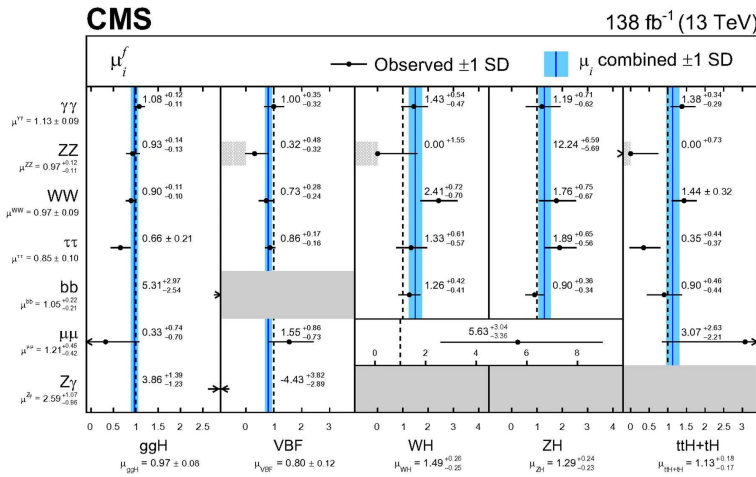


FIGURE 5: Combined signal strength modifier μ_i^f for all production and decay channels. The hatched gray bands indicate that the signal strength is forced to be positive and the dark grey shading indicates the absence of measurement. The vertical dashed line at 1 represents the SM expectation [15].

(20%), and $k_{Z\gamma}$ (40%). An additional degree of freedom is incorporated into the fit to account for invisible and undetected decay modes, restricting k_Z and k_W to be 1.0 or smaller. The results, shown in the right plot of Figure 6, are compatible with the SM with a p -value of 33%. Branching fractions to invisible and undetected Higgs boson decays are found to be compatible with zero, with 95% CL upper limits of $\mathcal{B}_{\text{Undet.}} < 0.16$ and $\mathcal{B}_{\text{Inv.}} < 0.17$.

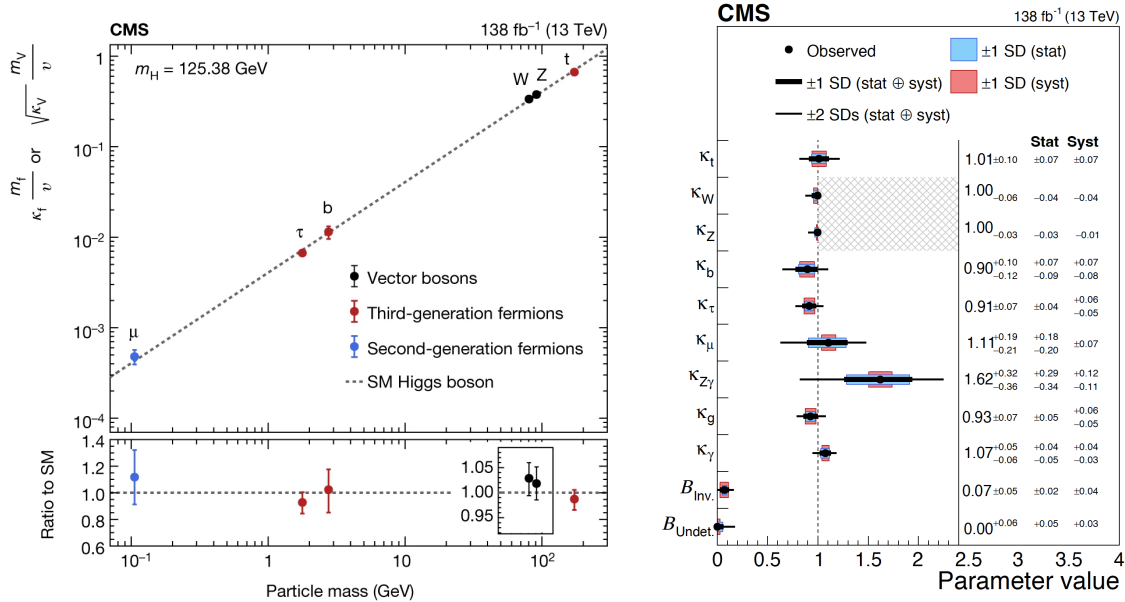


FIGURE 6: *Left*: measured modifiers of the Higgs boson couplings to vector bosons and fermions as a function of the mass of the particles. *Right*: coupling modifiers measured including loop-induced Higgs boson interactions. Invisible and undetected decay modes are considered in the fit [15].

5.1. The Higgs Boson Self-Coupling

The measurement of the Higgs boson self-coupling is pivotal for understanding the properties of the Electroweak Symmetry Breaking (EWSB) mechanism in the SM. The strength of the Higgs boson self-interaction is expressed as $\lambda = m_H^2 / (2v^2)$, where v is the vacuum expectation value of the Higgs field. Similar to the k -framework, this analysis establishes limits on the coupling modifier for the Higgs boson self-interaction (k_λ). Typically, constraints on k_λ are derived from measurements of Higgs boson pair production, but this analysis extends the approach to single Higgs boson production and decay, which is sensitive to next-to-leading-order quantum corrections due to k_λ modifications and can be used to set constraints complementary to those from searches for Higgs boson pair production. Both cases show the consistency of k_λ with 1, as illustrated in Figure 7.

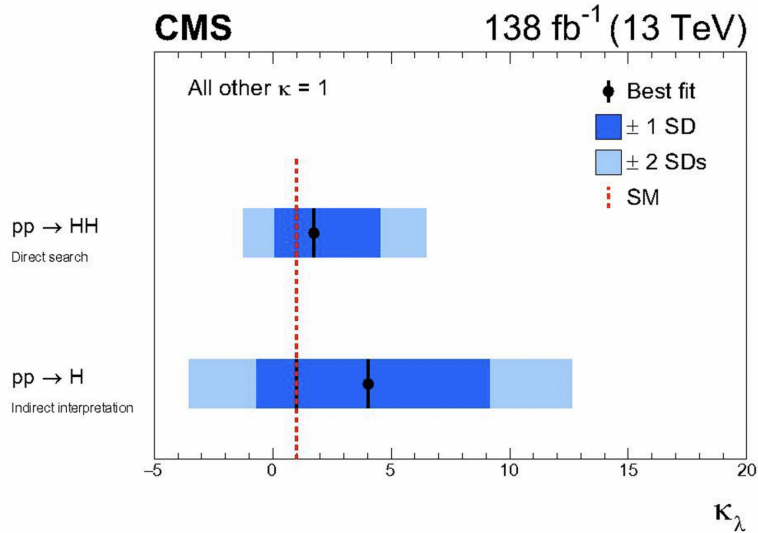


FIGURE 7: Constraints on the Higgs boson self-coupling obtained directly from Higgs boson pair production and indirect interpretation of single H measurements [15].

6. EXOTIC DECAYS OF THE HIGGS BOSON

The discovered Higgs boson demonstrates good compatibility with the Standard Model (SM), but ongoing exploration is underway for exotic decays as suggested by various Beyond Standard Model (BSM) theories. Notably, the ATLAS and CMS experiments have set upper bounds of 12% and 16%, respectively, on the branching fraction of the Higgs boson to new particles at a 95% CL using Run 2 LHC data [15, 16]. Given these limitations, it is essential to persist in data analysis to search for direct evidence of new particles interacting with the Higgs boson and to scrutinize potential extensions of the SM of particle physics. In this section, various searches for the exotic decays of the Higgs boson are presented.

6.1. Search for Higgs Boson Decays to a Z Boson and a Light Pseudoscalar

Motivated by theoretical models involving axion-like particles (ALPs) formulated within an effective field theory framework coupling ALPs to SM particles, a search for the Higgs boson decay process $H \rightarrow Za \rightarrow ll\gamma\gamma$ (with $l = e, \mu$) is undertaken for the pseudoscalar, a , having masses ranging from 1 to 30 GeV [17]. This study assumes the on-shell condition for the Z boson and excludes scenarios where the pseudoscalar has a mass below 1 GeV due to the potential instrumental merging of the two photons from the pseudoscalar decay. This specific situation requires a dedicated reconstruction technique and is therefore not addressed in the current analysis. The chosen final state provides a distinctive and experimentally clean signature, characterized by a low cross section from SM processes, marking the first such search at the LHC. Outcomes are derived through simultaneous unbinned maximum likelihood fits of the invariant mass of the four objects ($m_{ll\gamma\gamma}$), categorized based on the output of a BDT discriminator. As depicted in Figure 8, no substantial deviation from the background-only hypothesis is observed, and upper limits at a 95% CL are established for the production cross section times branching fraction.

6.2. Searches for Higgs Boson Decays to a Pair of Light Pseudoscalars

The Two-Higgs-Doublet Models extended by an additional scalar singlet (2HDM+S) postulate the existence of seven physical scalar and pseudoscalar particles. Among these, one scalar aligns with the discovered Higgs boson with a mass of 125 GeV. In 2HDM+S, four coupling scenarios can avoid flavor-changing neutral currents at the tree level. This includes the next-to-minimal supersymmetric extension of the SM as a specific case. These models predict the decay of the Higgs boson into a pair of light pseudoscalar bosons whenever kinematically feasible, a phenomenon that remains unexcluded to date.

6.2.1. Final State with Four Boosted Photons

In scenarios of fermiophobic a decays, where the branching fraction $\mathcal{B}(a \rightarrow \gamma\gamma)$ can approach unity, a search for $H \rightarrow aa \rightarrow 4\gamma$ is conducted for a lower pseudoscalar mass range of 0.1 to 1.2 GeV [18]. The primary challenge in this search arises from the boosted pseudoscalars, leading to the reconstruction difficulty of the diphoton mass. Due to the boosted nature, the two photons are predominantly reconstructed as a single photon-like object (Γ), resulting in a degenerate measured invariant mass $m_{\Gamma\Gamma}$ peak with the SM $H \rightarrow \gamma\gamma$ background. To address this challenge, a novel machine learning reconstruction algorithm is employed. This algorithm is trained on the electromagnetic calorimeter (ECAL) energy deposit patterns to measure the invariant mass m_Γ of the merged diphoton candidates, a task deemed impossible with the standard CMS reconstruction algorithm. Discrimination between signal and background, comprised of the SM $H \rightarrow \gamma\gamma$ process and other nonresonant processes, relies on the invariant masses

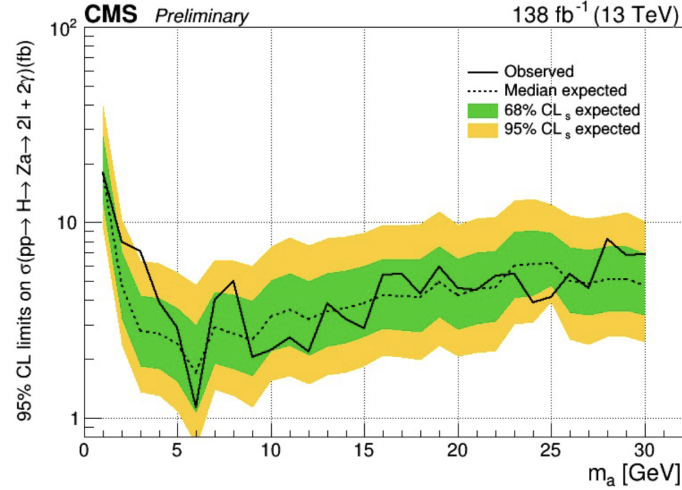


FIGURE 8: Expected and observed 95% CL limits on $\sigma(pp \rightarrow H) \times \mathcal{B}(H \rightarrow Za \rightarrow ll\gamma\gamma)$ for m_a from 1 to 30 GeV [17].

of the two merged diphoton candidates. No observable excess of events above the estimated background is identified, and upper limits at a 95% CL on $\mathcal{B}(H \rightarrow aa \rightarrow 4\gamma)$ are established, as illustrated on the left side of Figure 9.

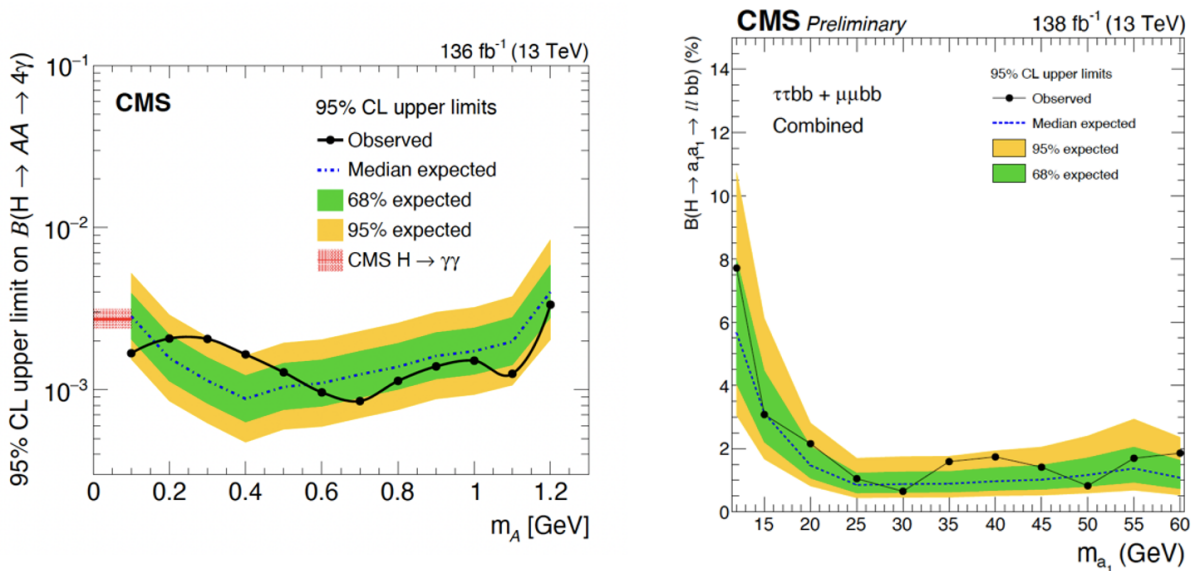


FIGURE 9: Expected and observed 95% CL limits on $\mathcal{B}(H \rightarrow aa \rightarrow 4\gamma)$ from the merged diphoton analyses [18] (left), and on $\mathcal{B}(H \rightarrow aa \rightarrow llbb)$ under the 2HDM+S scenarios [19] (right).

6.2.2. Final States with Two b Jets and Two Muons or Two Tau Leptons

A search for $H \rightarrow aa$ is performed in the $\tau\tau bb$ or $\mu\mu bb$ final states, targeting pseudoscalar masses from 15 to 60 GeV [19]. The $\tau\tau bb$ channel benefits from the large branching fractions of pseudoscalars decaying into heavy quarks and leptons. Three $\tau\tau$ final states are considered ($e\mu, e\tau_h, \mu\tau_h$), with the $\tau_h\tau_h$ channel excluded due to high trigger thresholds. Event categorization involves b jet multiplicity, and deep neural networks aid signal-background discrimination.

In the $\mu\mu bb$ final state, it benefits from the excellent $\mu\mu$ mass resolution and large pseudoscalar branching to heavy quarks. Employing event categorization based on jet transverse momentum, b jet tagging score, and invariant masses, discriminates signal from background. An unbinned maximum likelihood fit is performed on $\mu\mu$ invariant mass distribution to extract the results. No excess of events above the background-only expectation is observed in both final states. The combined analysis enhances sensitivity

to potential exotic decays of the Higgs boson. Upper limits are set at 95% CL on branching fractions in the 2HDM+S interpretation, as illustrated in Figure 9 (right).

6.3. Invisible Decays of the Higgs Boson

In SM, the predicted branching fraction $\mathcal{B}(H \rightarrow \text{inv})$ is approximately 0.1% through the $H \rightarrow ZZ^* \rightarrow 4\nu$ channel. However, in BSM scenarios, particularly those involving a scalar sector connecting the SM and dark sectors, the Higgs boson may exhibit an increased rate by decaying into a pair of dark matter particles when kinematically feasible. Consequently, the pursuit of direct searches for $H \rightarrow \text{inv}$ is crucial, and an observation of a higher-than-expected rate would serve as evidence for BSM physics. A recent search focuses on the invisible decays of the Higgs boson, produced in association with a pair of top quarks or a W/Z boson, leading to a fully hadronic final state is presented here [20]. The signal is characterized by a large missing transverse momentum from the invisibly decaying Higgs boson, recoiling from its associated hadronically decaying particles. The analysis reveals no significant excess of events beyond the SM prediction. At a 95% CL, an upper limit of 0.47 (0.40 expected) is imposed on the branching fraction $\mathcal{B}(H \rightarrow \text{inv})$, assuming the SM production cross section of the Higgs boson. Combining this analysis with previous searches in complementary production modes at $\sqrt{s} = 7, 8, \text{ and } 13 \text{ TeV}$ in Run 1 and Run 2 data of the LHC establishes a 95% CL upper limit on $\mathcal{B}(H \rightarrow \text{inv})$ of 0.15 (0.08 expected), as depicted in Figure 10.

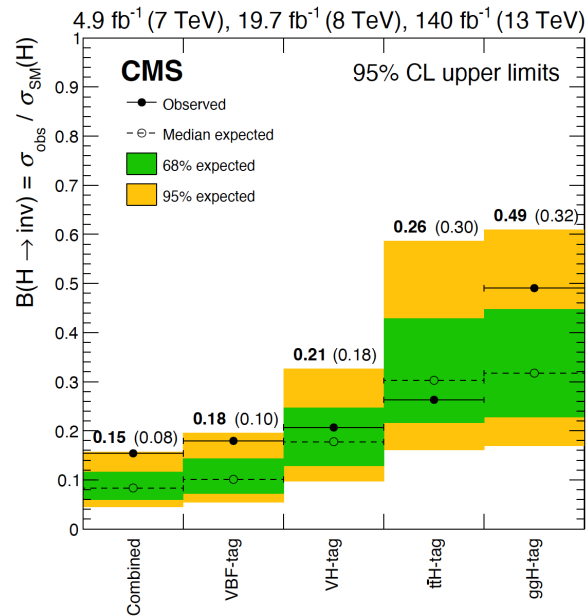


FIGURE 10: Expected and observed 95% CL limits on $\mathcal{B}(H \rightarrow \text{inv})$ with sensitivity breakdown in production modes, combining data from Run 1 and Run 2 [20].

7. SEARCHES FOR DOUBLE HIGGS BOSON PRODUCTION

The study of double Higgs boson production provides an avenue to measure the Higgs boson self-coupling (see Section 5) and the coupling between two Higgs bosons and two vector bosons. To ease the interpretation of the results, the coupling values are usually presented in terms of their ratios with respect to the standard model expectations, denoted as k_λ and k_{2V} . The main challenge lies in the significantly lower production cross section, three orders of magnitude less than single Higgs boson production, leading to results constrained by the statistical power of the dataset. The analysis focuses on final states where at least one Higgs boson decays into a pair of b quarks, profiting from the large $H \rightarrow bb$ branching fraction (58%). The combined analysis of various final states ($bbZZ$, multilepton, $bb\gamma\gamma$, $bb\tau\tau$, $bbbb$), illustrated in Figure 11, constrains the parameter k_λ within the interval $-1.24 < k_\lambda < 6.49$ and the parameter k_{2V} within the interval $0.67 < k_{2V} < 1.38$, with a noteworthy exclusion of $k_{2V} = 0$ at a significance of 6.6 standard deviations [15].

8. CONCLUSIONS

The journey to comprehend the Higgs boson's properties, initiated with its discovery in July 2012, has reached a significant milestone with the comprehensive analysis of the full Run 2 dataset. This extensive dataset enables the exploration and combination of a large number of production modes and decay channels, facilitating an intricate characterization of the Higgs boson's profile.

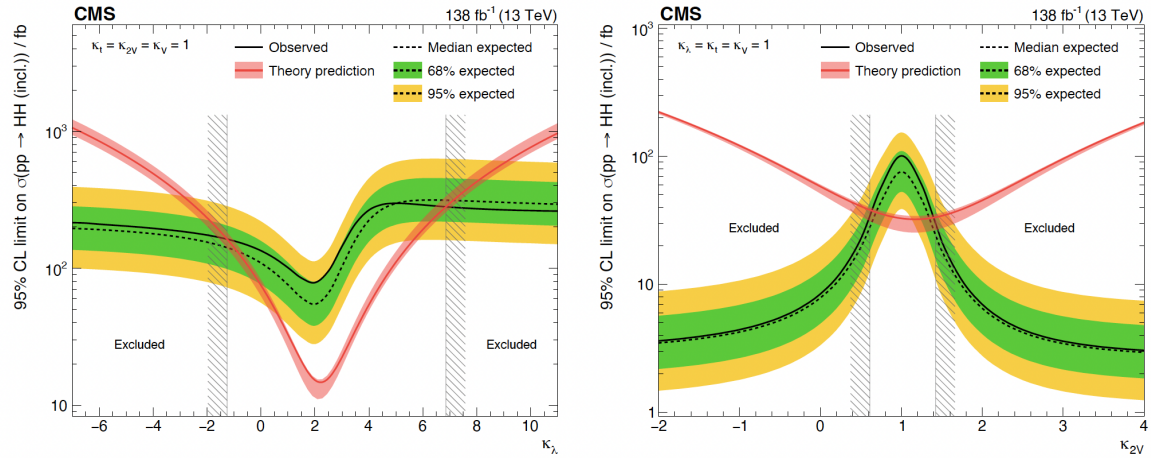


FIGURE 11: Combined expected and observed 95% CL upper limits on the HH production cross section for different values of k_λ (left) and k_{2V} (right) [15].

Precise measurements of its production cross sections, production and decay rates and couplings to other particles underscore the remarkable agreement with Standard Model expectations. Notably, no indications of new physics beyond the Standard Model are observed, as evident from the consistent and negligible branching fraction for Higgs to invisible decays. Several results in this analysis showcase a substantial enhancement in precision compared to the corresponding results at the time of the Higgs boson discovery. The full Run 2 dataset marks an entrance into the precision physics realm, where many experimental results are starting to have comparable statistical and systematic uncertainties, soon becoming predominantly limited by the latter.

References

- [1] ATLAS Collaboration, “The ATLAS Experiment at the CERN LHC,” JINST 3 S08003 (2008).
- [2] CMS Collaboration, “The CMS experiment at the CERN LHC,” JINST 3 S08004 (2008).
- [3] ATLAS Collaboration, “Observation of a new particle in the search for the standard model Higgs boson with the ATLAS detector at the LHC,” Phys. Lett. B 716, 1 (2012).
- [4] CMS Collaboration, “Observation of a new boson at a mass of 125 GeV with the CMS experiment at the LHC,” Phys. Lett. B 716, 30 (2012).
- [5] CMS Collaboration, “Observation of a new boson with mass near 125 GeV in pp collisions at $\sqrt{s} = 7$ and 8 TeV,” JHEP, 06, 081 (2013).
- [6] CMS Collaboration, “A measurement of the Higgs boson mass in the diphoton decay channel,” Physics Letters B, 805, 135425 (2020).
- [7] CMS Collaboration, “Measurement of the Higgs boson mass and width using the four leptons final state,” CMS-PAS-HIG-21-019.
- [8] CMS Collaboration, “Measurement of the Higgs boson width and evidence of its off-shell contributions to ZZ production,” Nature Physics, 18(11), 1329–1334 (2022).
- [9] CMS Collaboration, “Measurements of Higgs boson production cross sections and couplings in the diphoton decay channel at $\sqrt{s} = 13$ TeV,” J. High Energy. Phys. 2021, 27 (2021).
- [10] CMS Collaboration, “Measurement of the Higgs boson inclusive and differential fiducial production cross sections in the diphoton decay channel with pp collisions at $\sqrt{s} = 13$ TeV,” J. High Energy. Phys. 2023, 91 (2023).
- [11] CMS Collaboration, “Measurements of production cross sections of the Higgs boson in the four-lepton final state in proton–proton collisions at $\sqrt{s} = 13$ TeV,” Eur. Phys. J. C 81, 488 (2021).
- [12] CMS Collaboration, “Measurements of the Higgs boson production cross section and couplings in the W boson pair decay channel in proton–proton collisions at $\sqrt{s} = 13$ TeV,” Eur. Phys. J. C 83, 667 (2023).
- [13] CMS Collaboration, “Measurements of Higgs boson production in the decay channel with a pair of τ leptons in proton–proton collisions at $\sqrt{s} = 13$ TeV,” Eur. Phys. J. C 83, 562 (2023).
- [14] CMS Collaboration, “Measurement of simplified template cross sections of the Higgs boson produced in association with W or Z bosons in the $H \rightarrow b\bar{b}$ decay channel in proton–proton collisions at $\sqrt{s} = 13$ TeV,” Submitted to Phys. Rev. D, arXiv:2312.07562 (2023).
- [15] CMS Collaboration, “A portrait of the Higgs boson by the CMS experiment ten years after the discovery,” Nature 607, 60–68 (2022).
- [16] ATLAS Collaboration, “A detailed map of Higgs boson interactions by the ATLAS experiment ten years after the discovery,” Nature 607, 52 [2207.00092] (2022).
- [17] CMS Collaboration, “Search for the exotic decay of the Higgs boson into a Z boson and a light pseudoscalar decaying into two photons in pp collisions $\sqrt{s} = 13$ TeV,” CMS-PAS-HIG-22-003.
- [18] CMS Collaboration, “Search for exotic Higgs boson decays $H \rightarrow \mathcal{A}\mathcal{A} \rightarrow 4\gamma$ with events containing two merged diphotons in proton–proton collisions at $\sqrt{s} = 13$ TeV,” Phys. Rev. Lett. 131, 101801 [2209.06197] (2023).
- [19] CMS Collaboration, “Search for exotic Higgs boson decays to a pair of pseudoscalars in the $\mu\mu b\bar{b}$ and $\tau\tau b\bar{b}$ final states in proton–proton collisions with the CMS experiment,” CMS-PAS-HIG-22-007.
- [20] CMS Collaboration, “A search for decays of the Higgs boson to invisible particles in events with a top–antitop quark pair or a vector boson in proton–proton collisions at $\sqrt{s} = 13$ TeV,” Eur. Phys. J. C 83, 933 (2023).